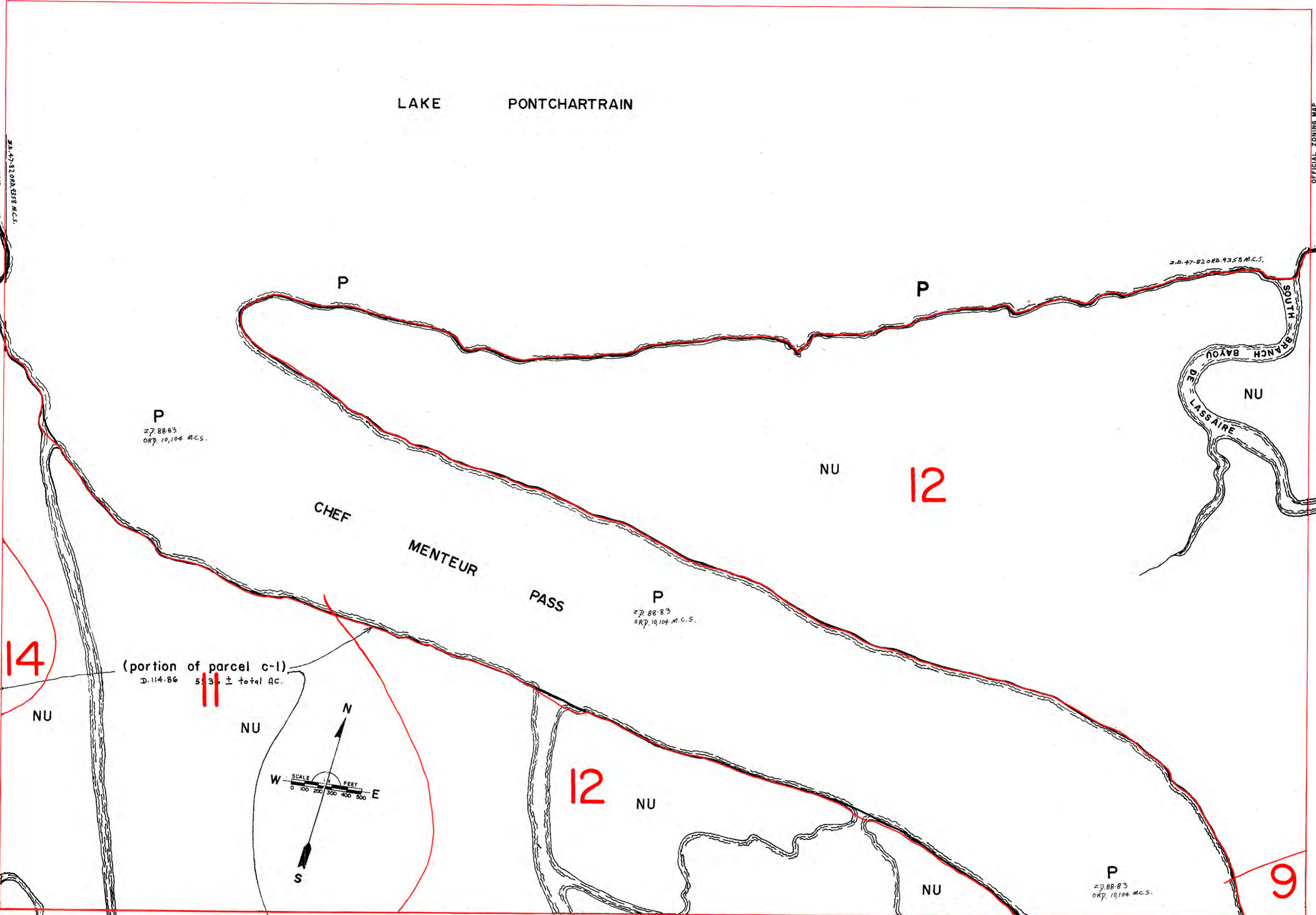


NONE

LAKE PONTCHARTRAIN

OFFICIAL ZONING MAP
APPROVED AND ADOPTED AS PART OF CAL. ORD. NO. 4599
APPROVED AND MADE PART OF M.C.S. ORD. NO. 4264
ADOPTED 4/23/20
MAYOR



M-10

O-10

14

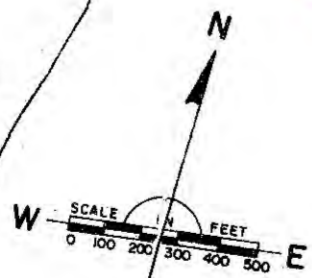
12

(portion of parcel c-1)
D. 114-86 5.3 ± total AC.

11

12

9



EUSTIS ENGINEERING COMPANY
SOIL AND FOUNDATION CONSULTANTS
METAIRIE, LOUISIANA

GEOLOGICAL MAPPING UNITS

N-10

PREPARED BY CITY PLANNING COMMISSION, REVISED 1970
10-13-84
D. P. H.